

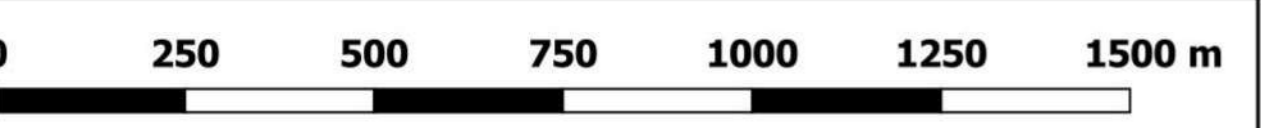
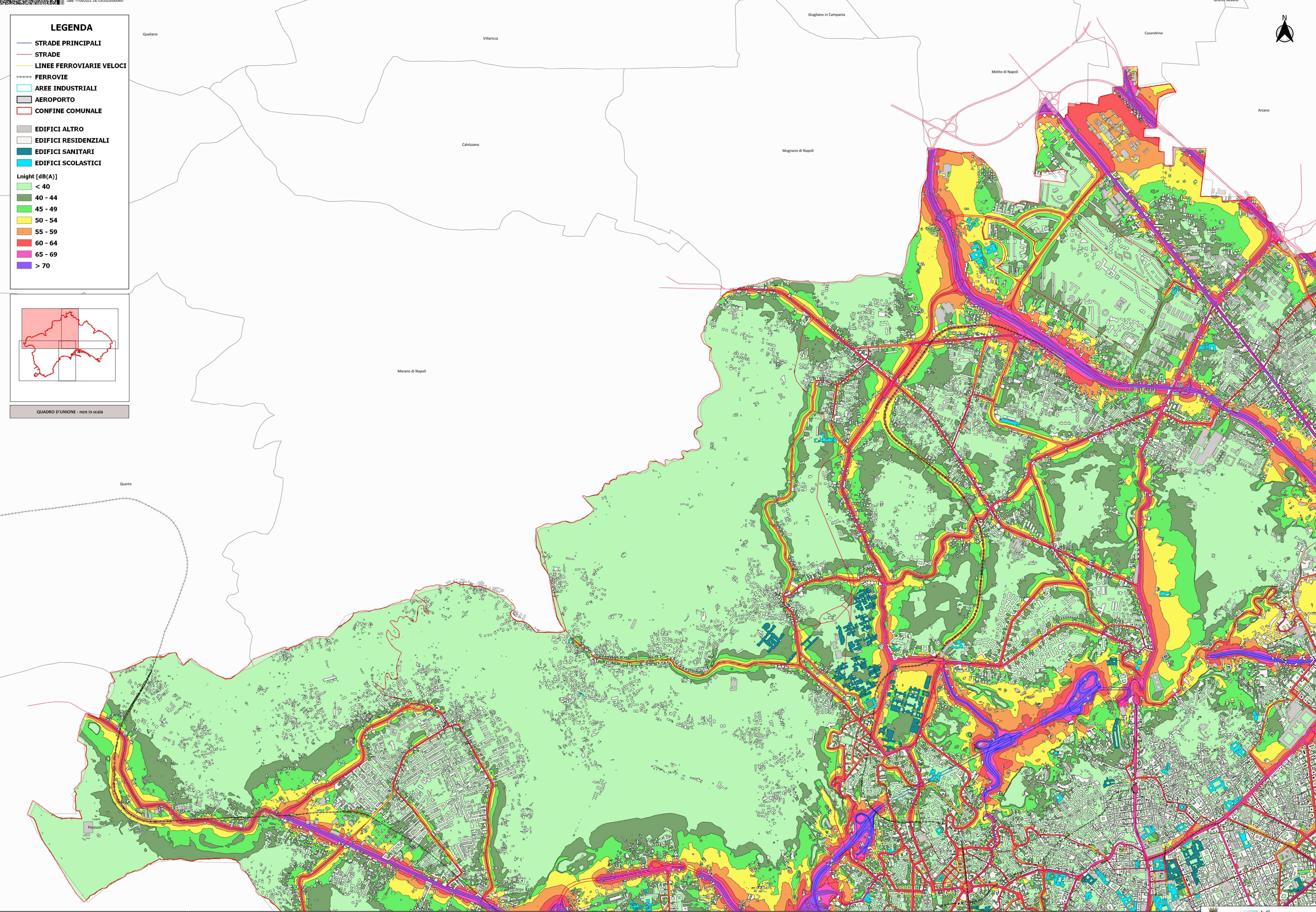
LEGENDA

- STRADE PRINCIPALI
- STRADE
- LINEE FERROVIARIE VELOCI
- FERROVIE
- AREE INDUSTRIALI
- AEROPORTO
- CONFINE COMUNALE
- EDIFICI ALTRO
- EDIFICI RESIDENZIALI
- EDIFICI SANITARI
- EDIFICI SCOLASTICI

Lnight [dB(A)]

- < 40
- 40 - 44
- 45 - 49
- 50 - 54
- 55 - 59
- 60 - 64
- 65 - 69
- > 70

QUADRO D'UNIONE - non in scala



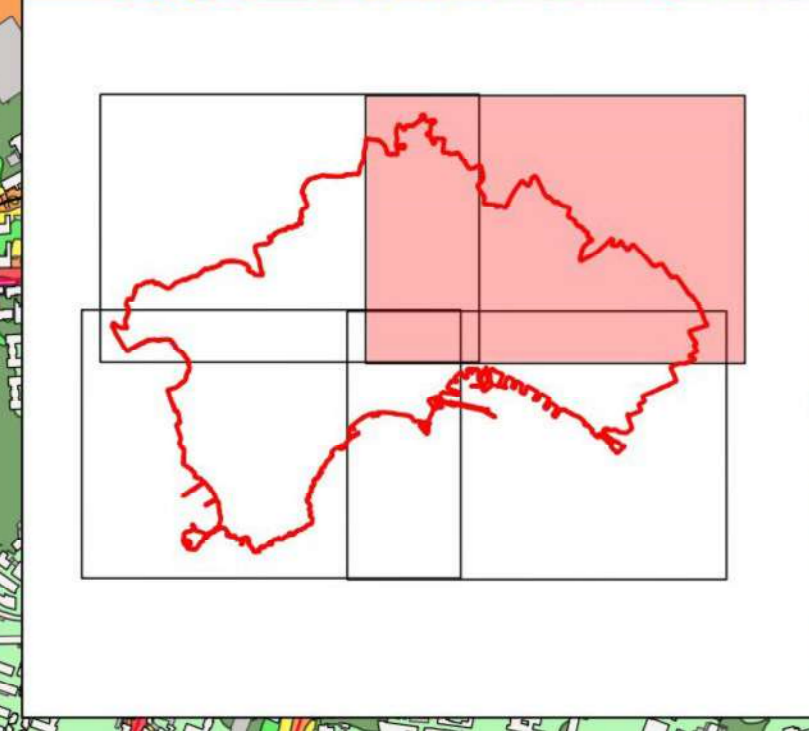


LEGENDA

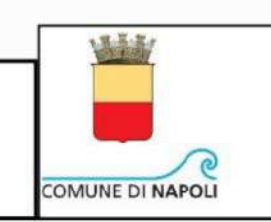
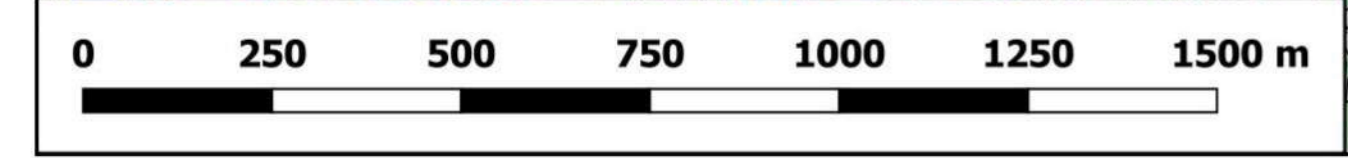
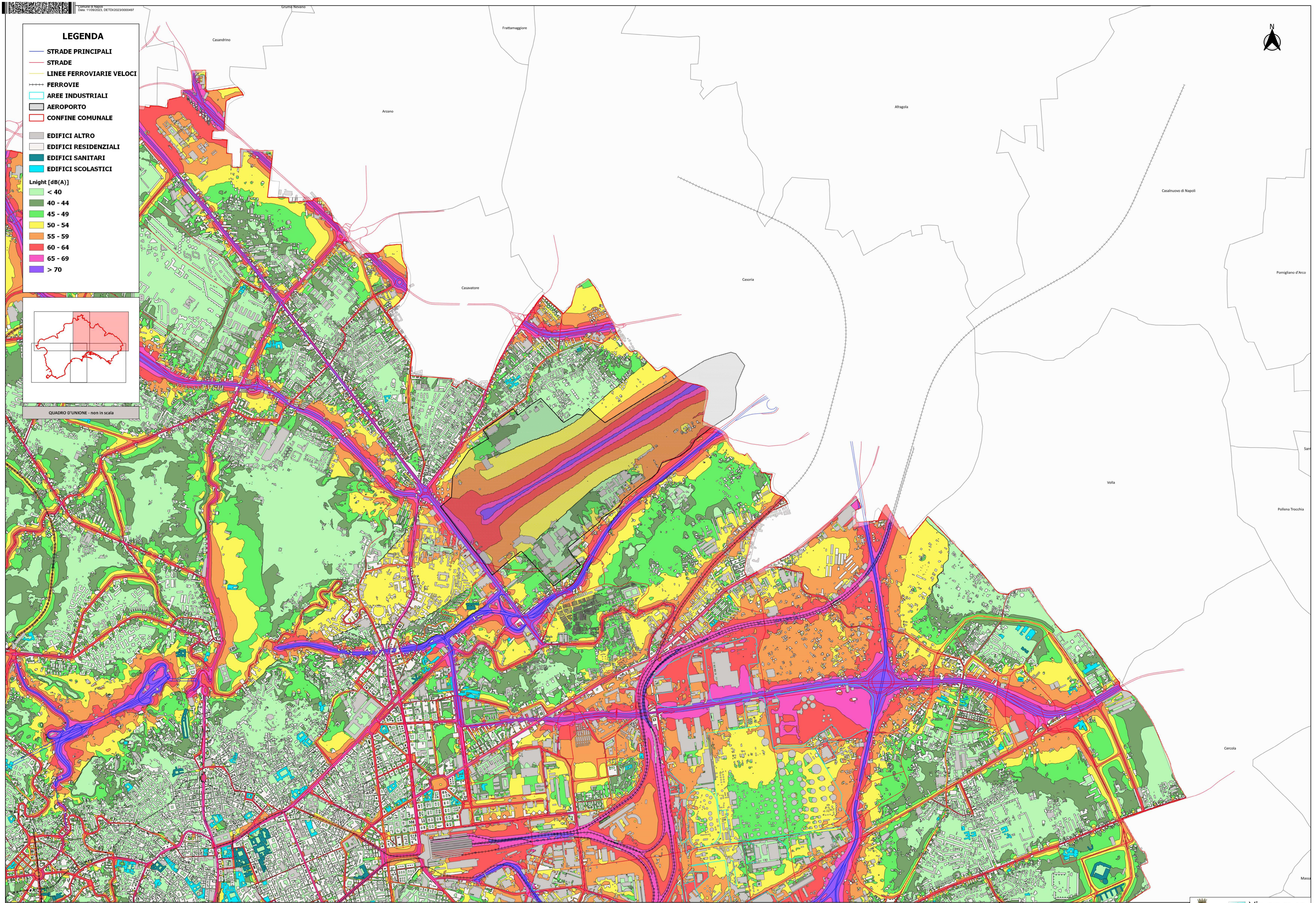
- STRADE PRINCIPALI
- STRADE
- LINEE FERROVIARIE VELOCI
- FERROVIE
- AREE INDUSTRIALI
- AEROPORTO
- CONFINE COMUNALE
- EDIFICI ALTRO
- EDIFICI RESIDENZIALI
- EDIFICI SANITARI
- EDIFICI SCOLASTICI

Lnight [dB(A)]

- < 40
- 40 - 44
- 45 - 49
- 50 - 54
- 55 - 59
- 60 - 64
- 65 - 69
- > 70



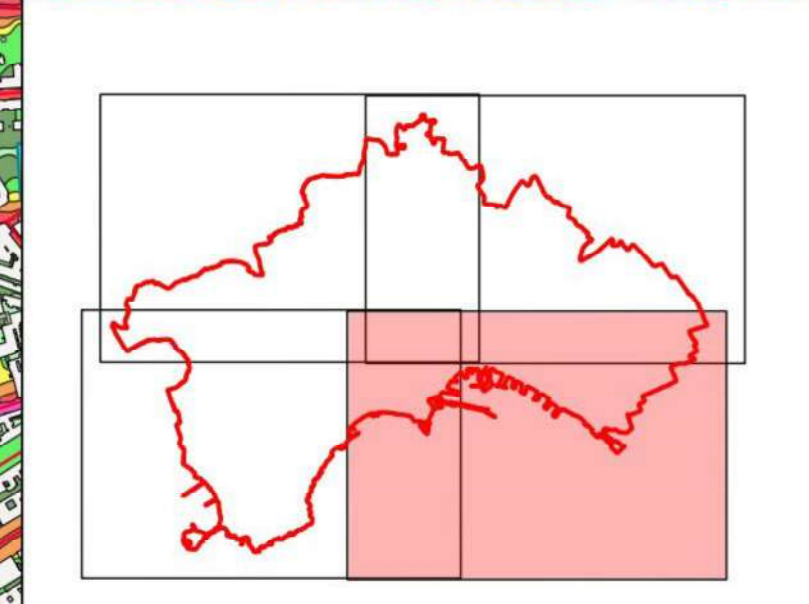
QUADRO D'UNIONE - non in scala



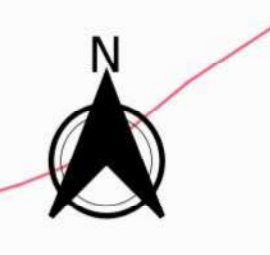
LEGENDA

- STRADE PRINCIPALI
- STRADE
- LINEE FERROVIARIE VELOCI
- FERROVIE
- AREE INDUSTRIALI
- AEROPORTO
- CONFINE COMUNALE
- EDIFICI ALTRO
- EDIFICI RESIDENZIALI
- EDIFICI SANITARI
- EDIFICI SCOLASTICI

- Lnight [dB(A)]
- < 40
 - 40 - 44
 - 45 - 49
 - 50 - 54
 - 55 - 59
 - 60 - 64
 - 65 - 69
 - > 70



QUADRO D'UNIONE - non in scala



Cercola

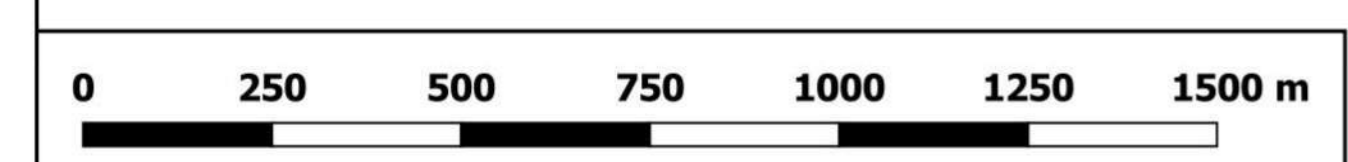
San Sebastiano al Vesuvio

San Giorgio a Cremano

Portici

Ercolano

Torre del

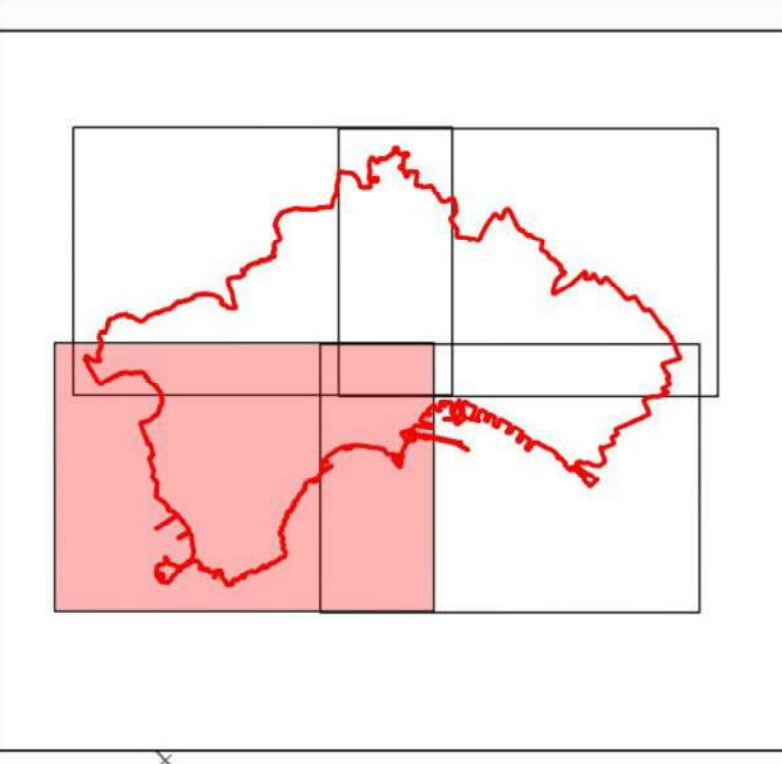


LEGENDA

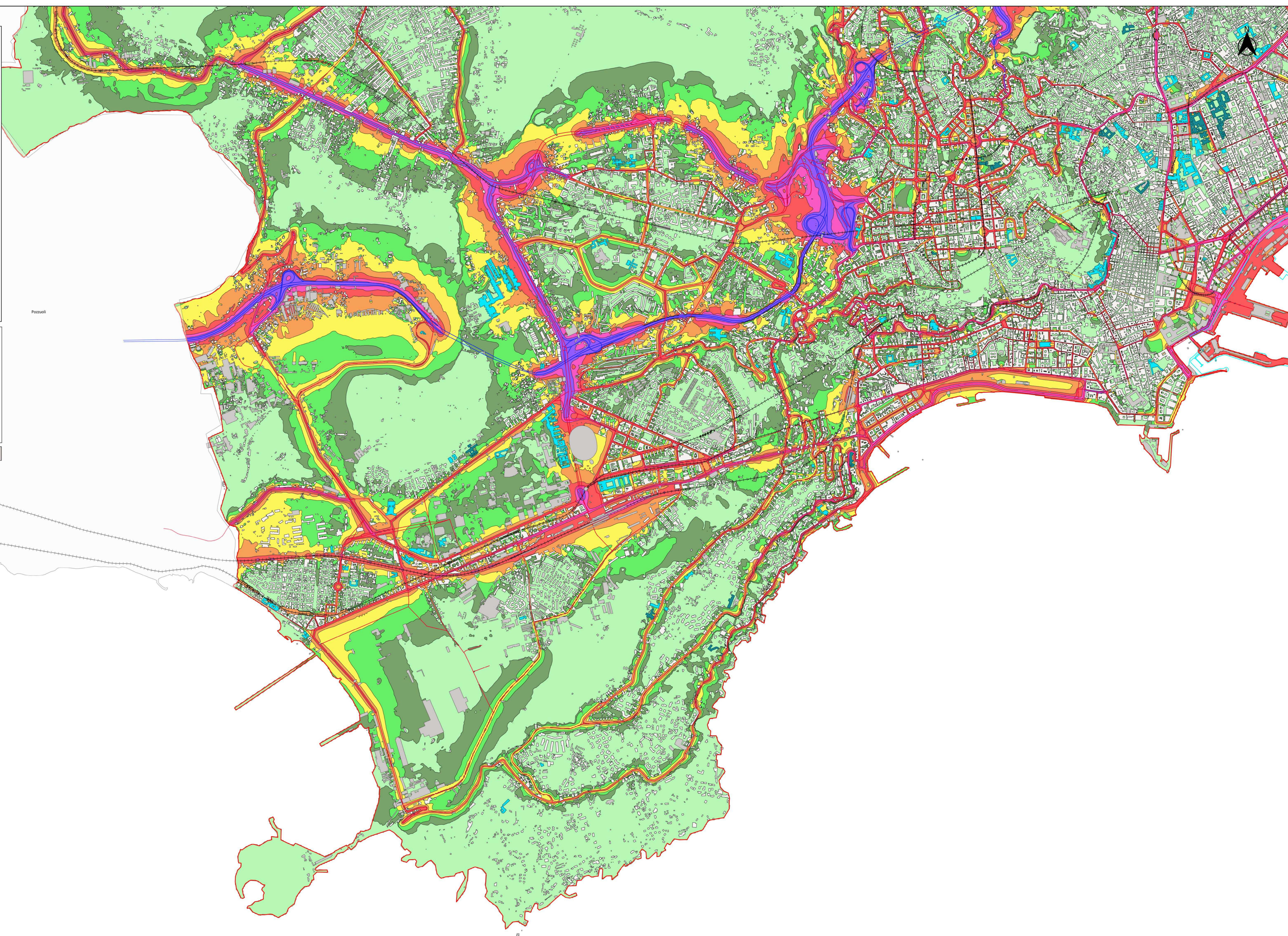
- STRADE PRINCIPALI
- STRADE
- LINEE FERROVIARIE VELOCI
- FERROVIE
- AREE INDUSTRIALI
- AEROPORTO
- CONFINE COMUNALE

- EDIFICI ALTRO
- EDIFICI RESIDENZIALI
- EDIFICI SANITARI
- EDIFICI SCOLASTICI

- Lnight [dB(A)]**
- < 40
 - 40 - 44
 - 45 - 49
 - 50 - 54
 - 55 - 59
 - 60 - 64
 - 65 - 69
 - > 70



QUADRO D'UNIONE - non in scala



Pozzuoli

