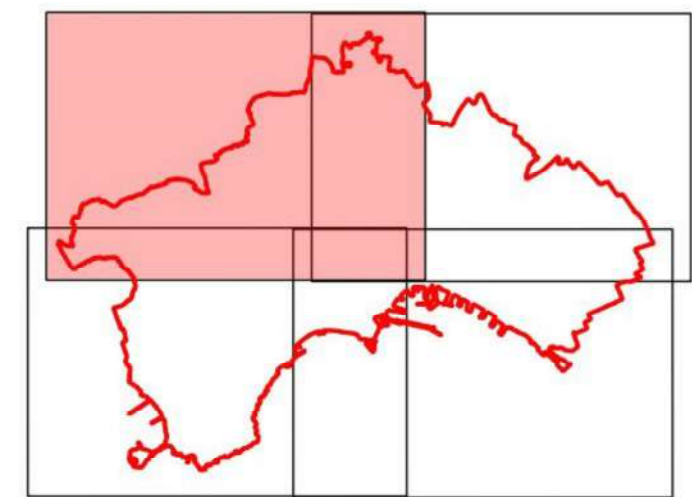
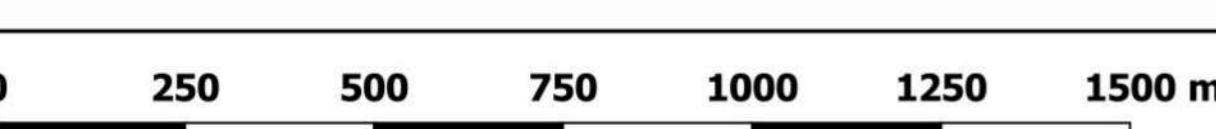
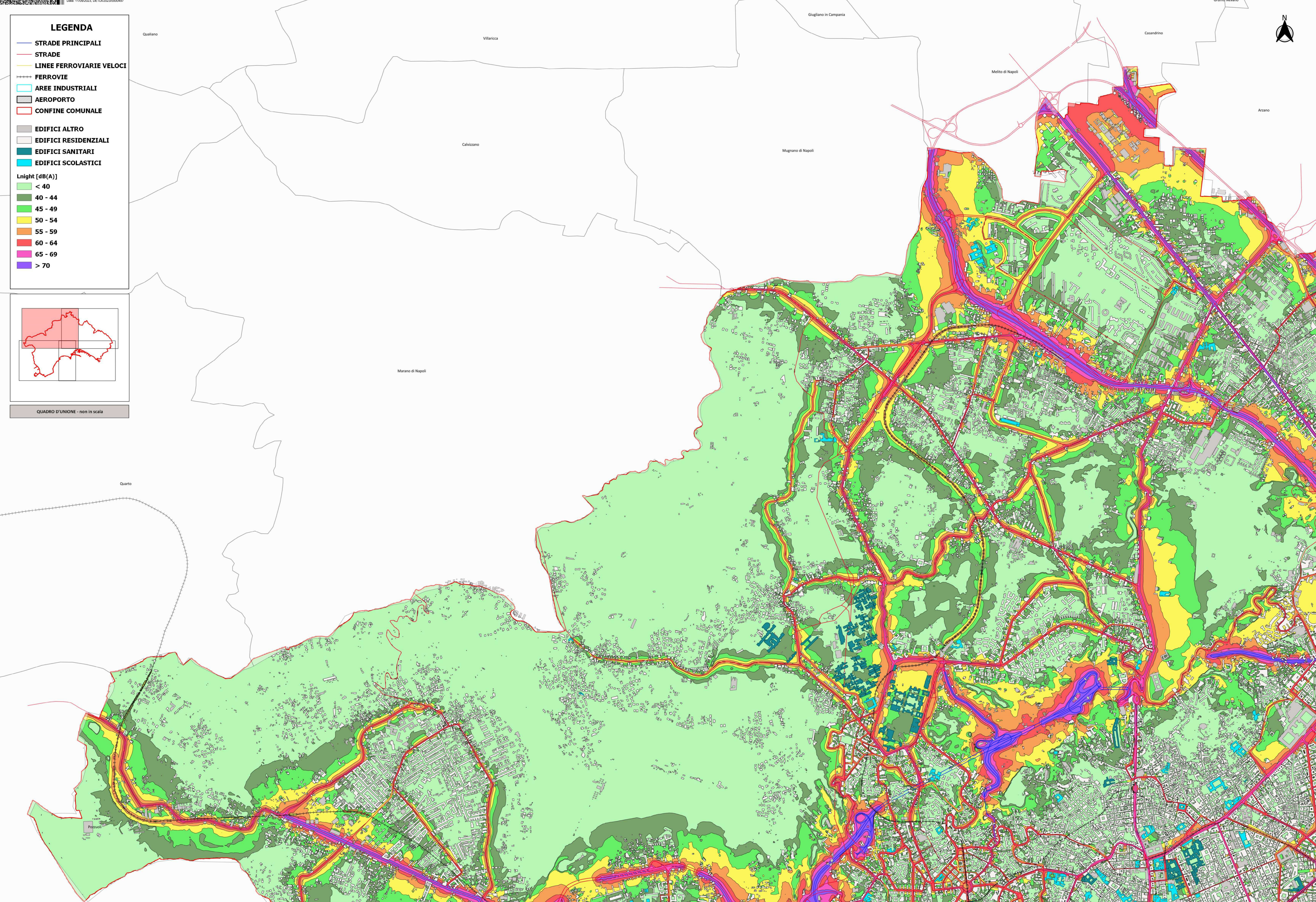


### LEGENDA

-  STRADE PRINCIPALI
-  STRADE
-  LINEE FERROVIARIE VELOCI
-  FERROVIE
-  AREE INDUSTRIALI
-  AEROPORTO
-  CONFINE COMUNALE
  
-  EDIFICI ALTRO
-  EDIFICI RESIDENZIALI
-  EDIFICI SANITARI
-  EDIFICI SCOLASTICI
  
- Lnight [dB(A)]**
-  < 40
-  40 - 44
-  45 - 49
-  50 - 54
-  55 - 59
-  60 - 64
-  65 - 69
-  > 70



QUADRO D'UNIONE - non in scala



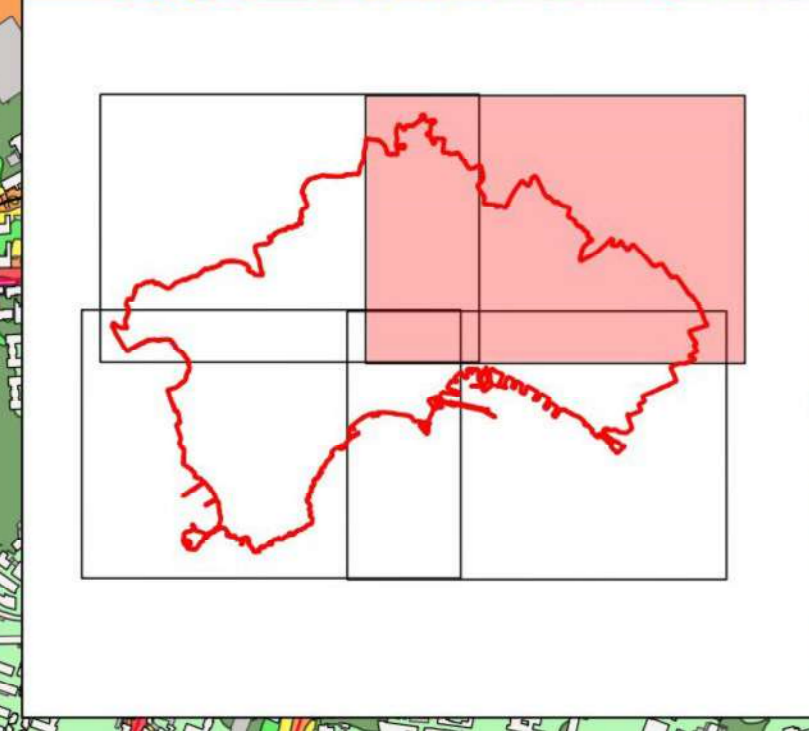


**LEGENDA**

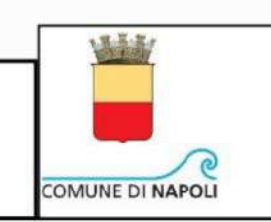
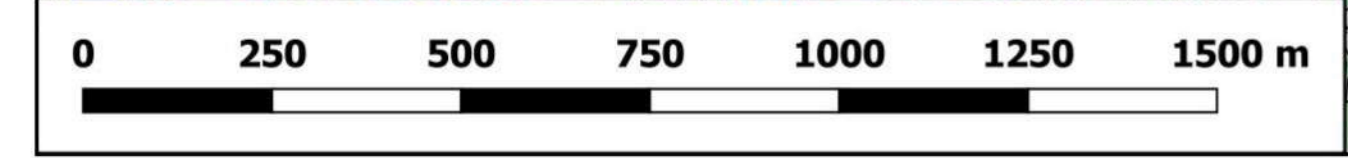
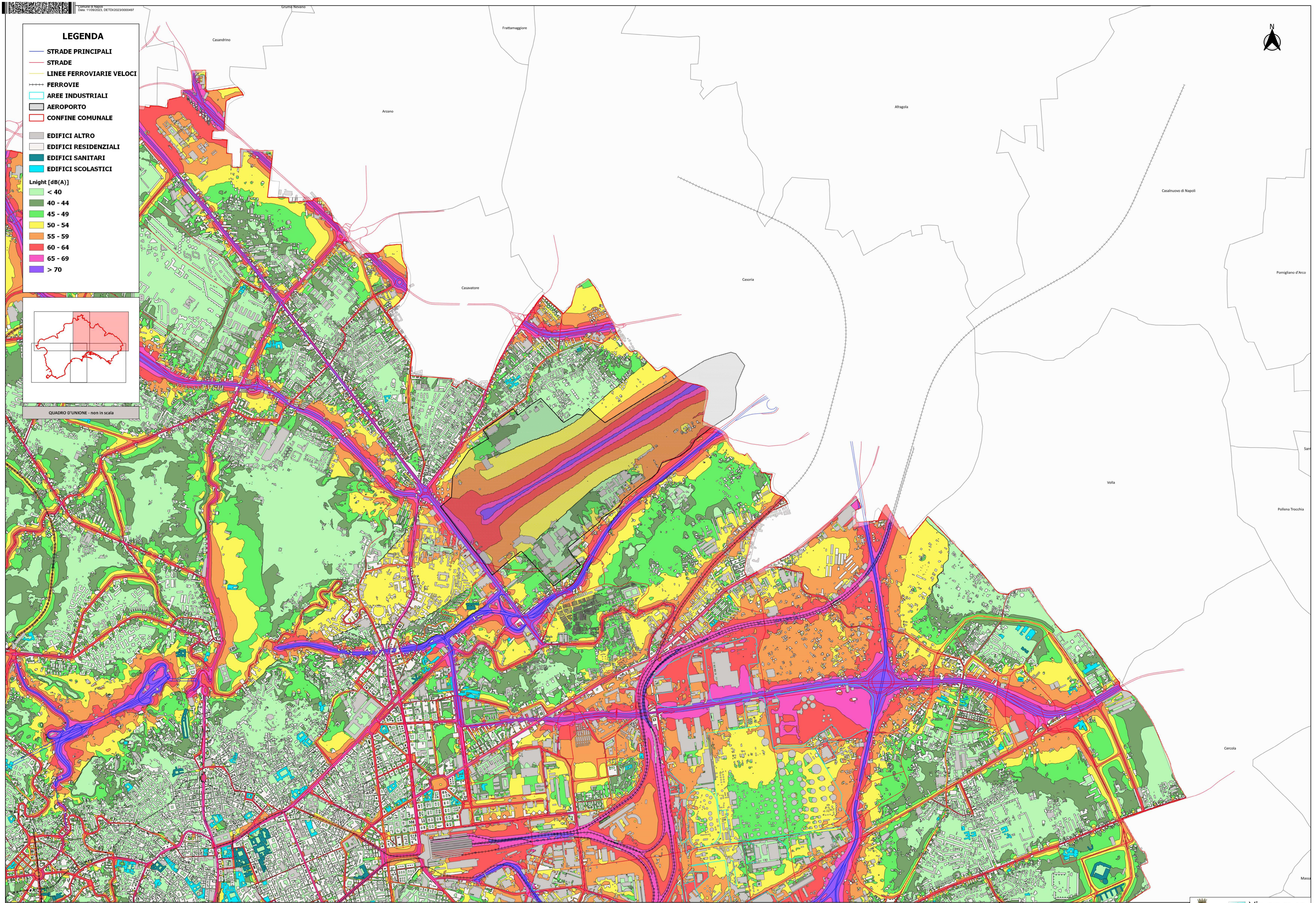
- STRADE PRINCIPALI
- STRADE
- LINEE FERROVIARIE VELOCI
- FERROVIE
- AREE INDUSTRIALI
- AEROPORTO
- CONFINE COMUNALE
- EDIFICI ALTRO
- EDIFICI RESIDENZIALI
- EDIFICI SANITARI
- EDIFICI SCOLASTICI

**Lnight [dB(A)]**

- < 40
- 40 - 44
- 45 - 49
- 50 - 54
- 55 - 59
- 60 - 64
- 65 - 69
- > 70



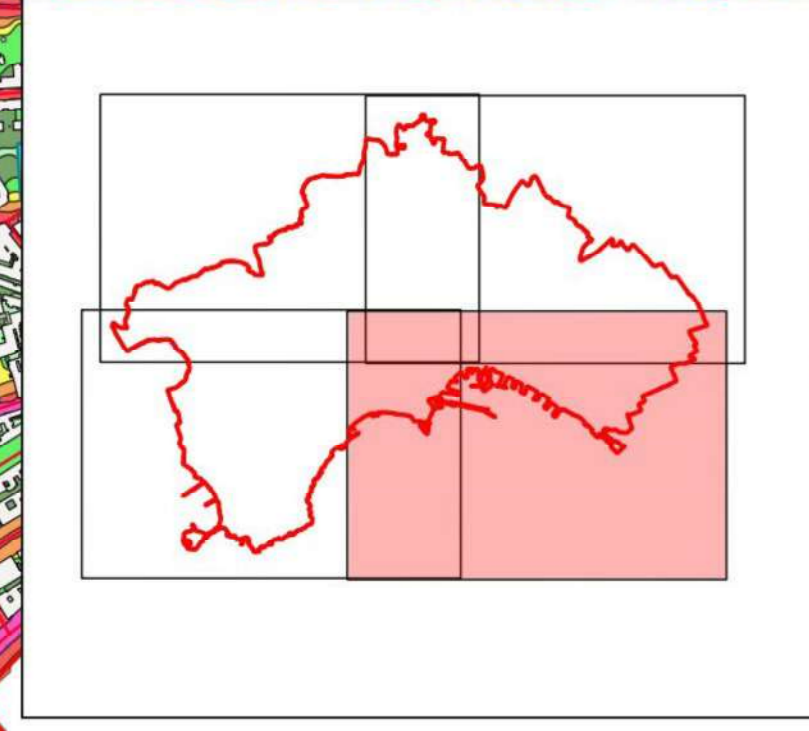
QUADRO D'UNIONE - non in scala



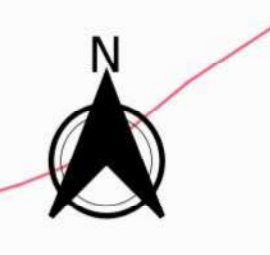
**LEGENDA**

- STRADE PRINCIPALI
- STRADE
- LINEE FERROVIARIE VELOCI
- FERROVIE
- AREE INDUSTRIALI
- AEROPORTO
- CONFINE COMUNALE
- EDIFICI ALTRO
- EDIFICI RESIDENZIALI
- EDIFICI SANITARI
- EDIFICI SCOLASTICI

- Lnight [dB(A)]
- < 40
  - 40 - 44
  - 45 - 49
  - 50 - 54
  - 55 - 59
  - 60 - 64
  - 65 - 69
  - > 70



QUADRO D'UNIONE - non in scala



Cercola

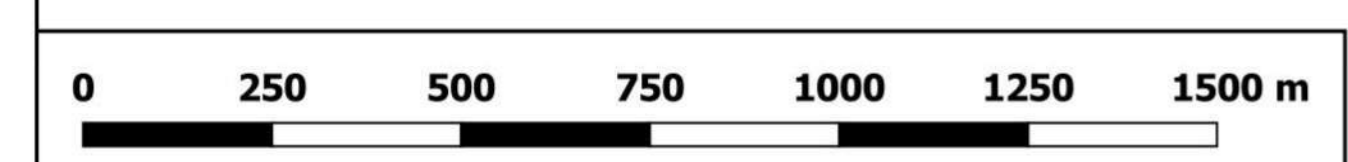
San Sebastiano al Vesuvio

San Giorgio a Cremano

Portici

Ercolano

Torre del

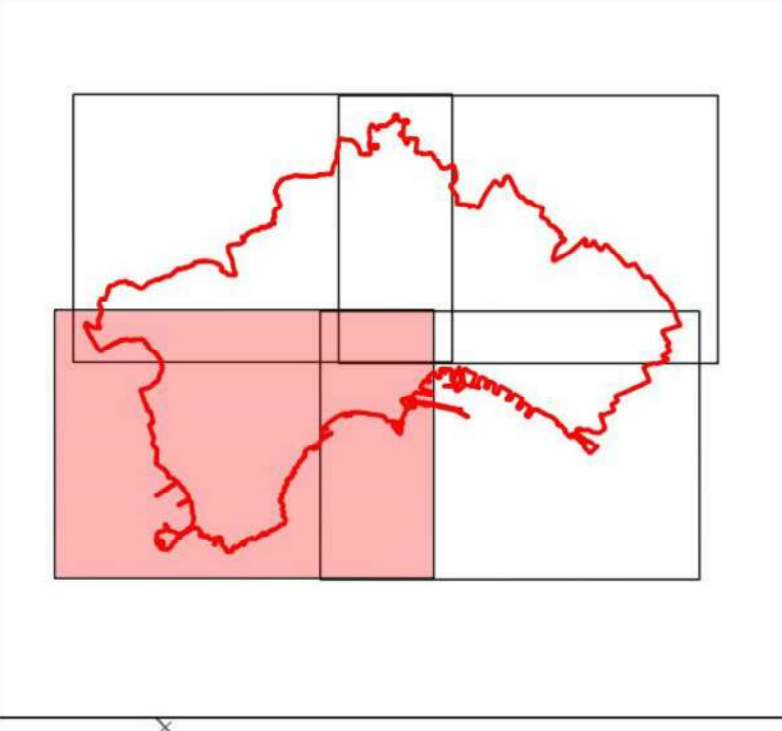


### LEGENDA

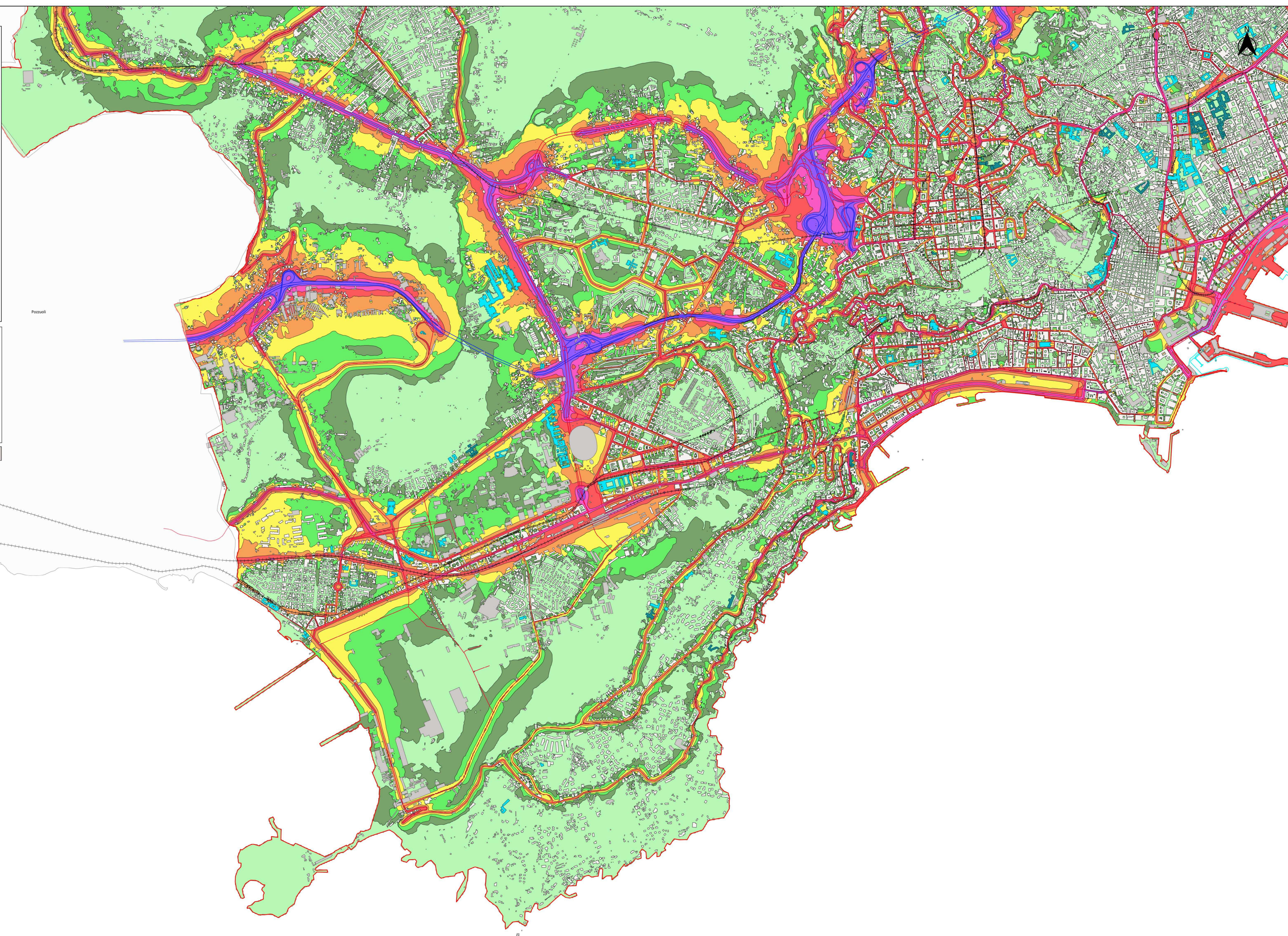
- STRADE PRINCIPALI
- STRADE
- LINEE FERROVIARIE VELOCI
- FERROVIE
- AREE INDUSTRIALI
- AEROPORTO
- CONFINE COMUNALE

- EDIFICI ALTRO
- EDIFICI RESIDENZIALI
- EDIFICI SANITARI
- EDIFICI SCOLASTICI

- Lnight [dB(A)]
- < 40
  - 40 - 44
  - 45 - 49
  - 50 - 54
  - 55 - 59
  - 60 - 64
  - 65 - 69
  - > 70



QUADRO D'UNIONE - non in scala



Pozzuoli

