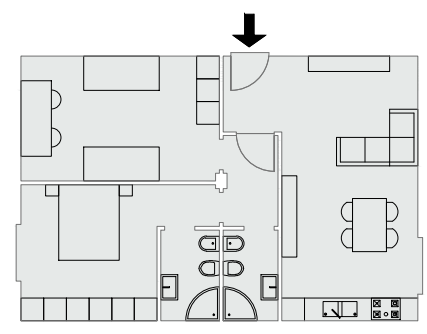
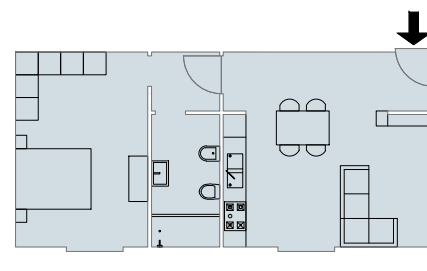


ALLOGGIO TIPO A
Superficie Utile: 72 mq
Numero di alloggi: 25



ALLOGGIO TIPO B
Superficie Utile: 58 mq
Numero di alloggi: 20



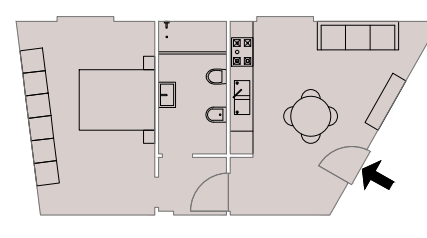
ALLOGGIO TIPO C
Superficie Utile: 75 mq
Numero di alloggi: 20



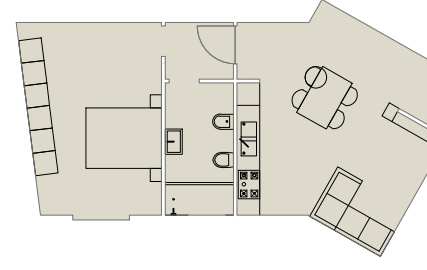
ALLOGGIO TIPO D
Superficie Utile: 98 mq
Numero di alloggi: 5



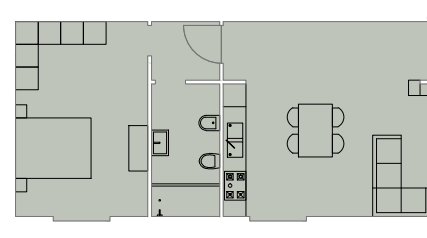
ALLOGGIO TIPO E
Superficie Utile: 48 mq
Numero di alloggi: 5



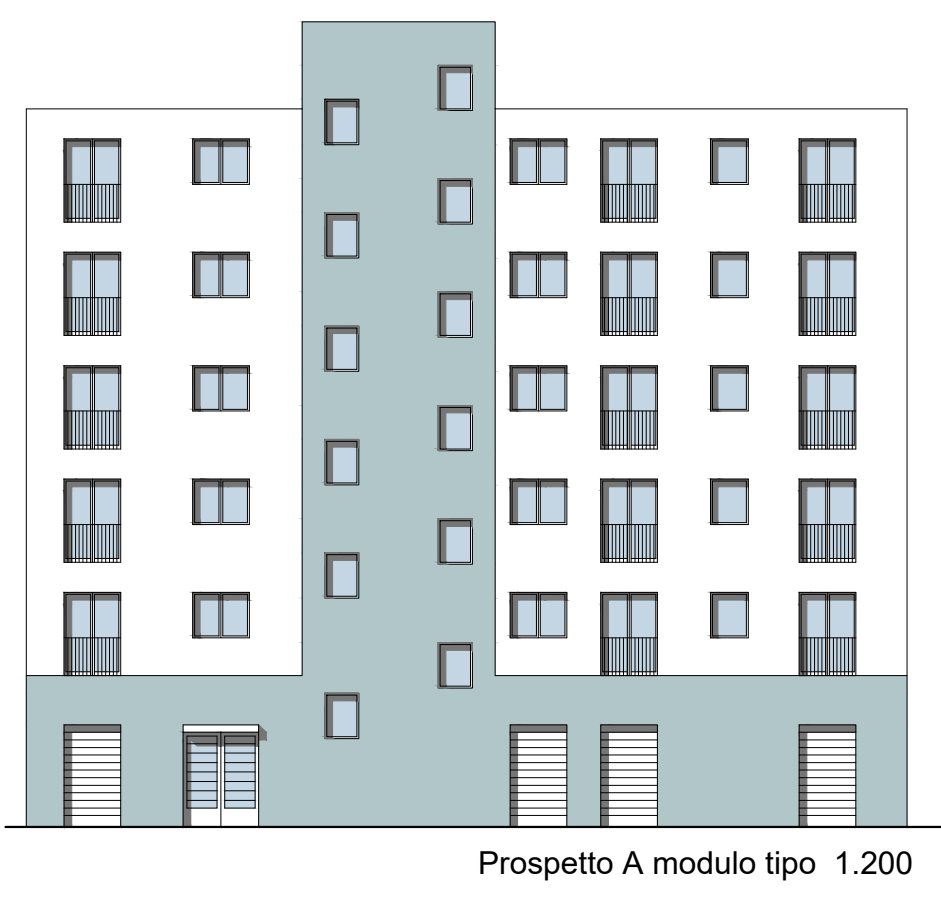
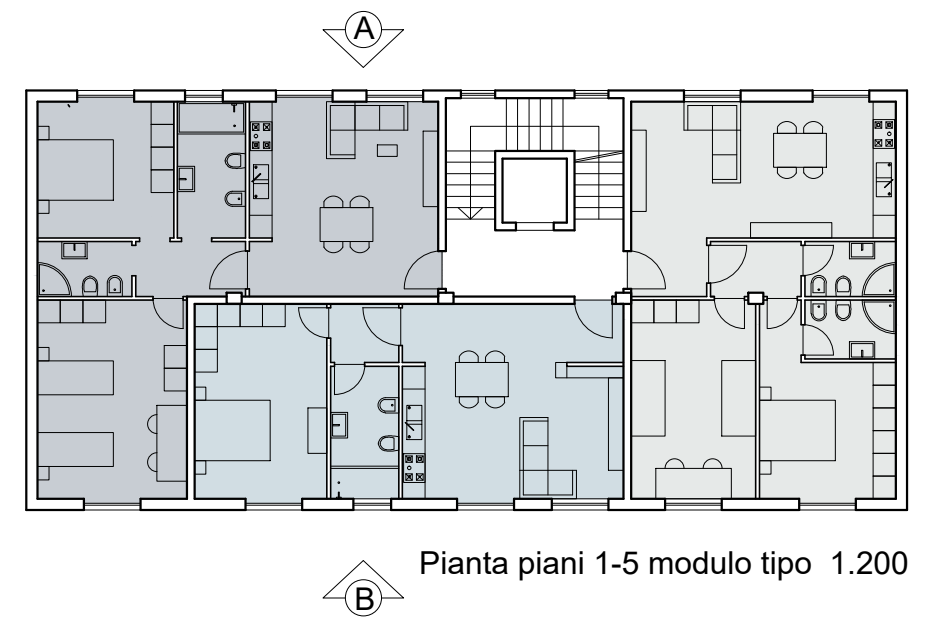
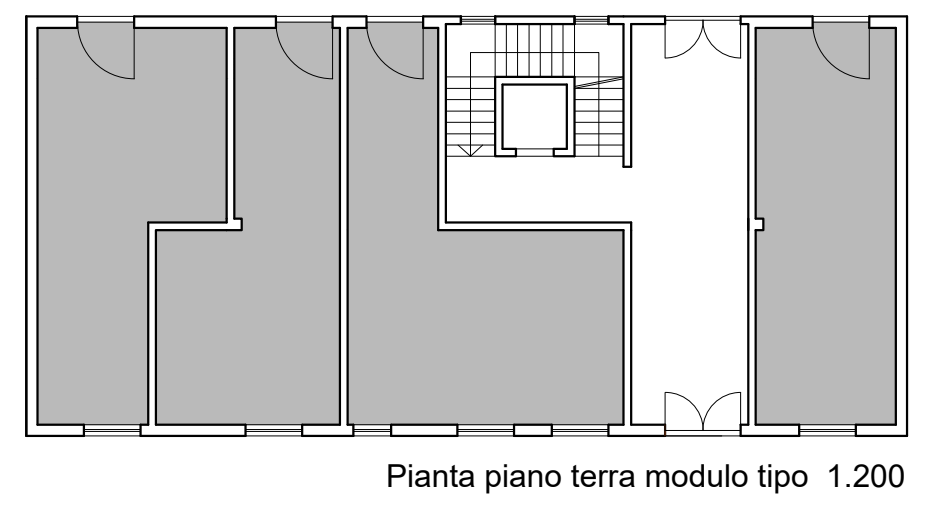
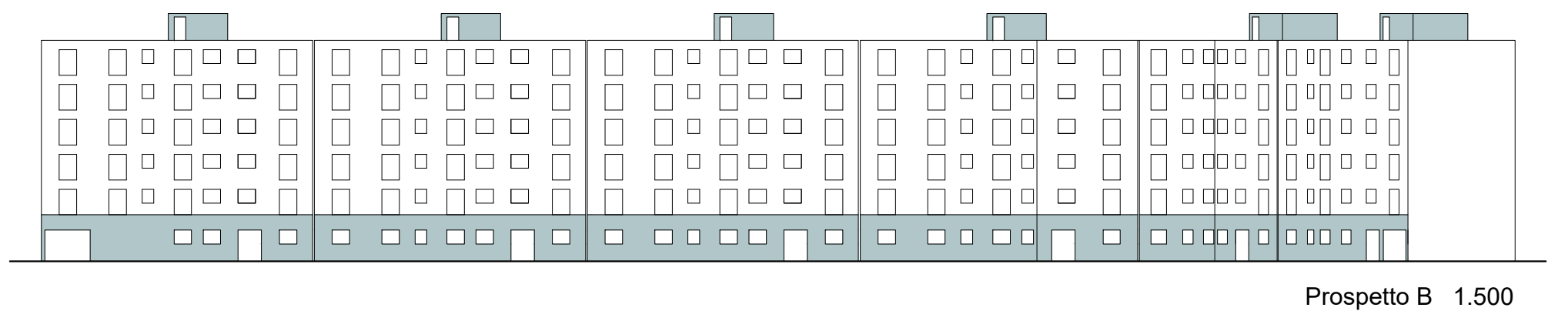
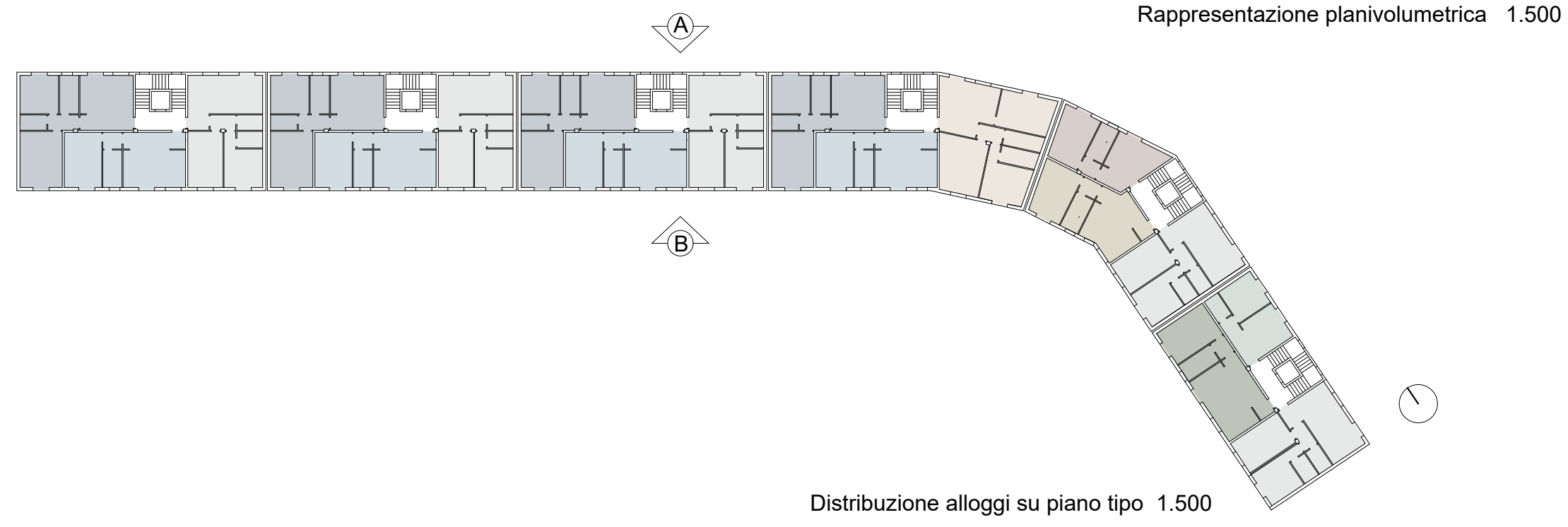
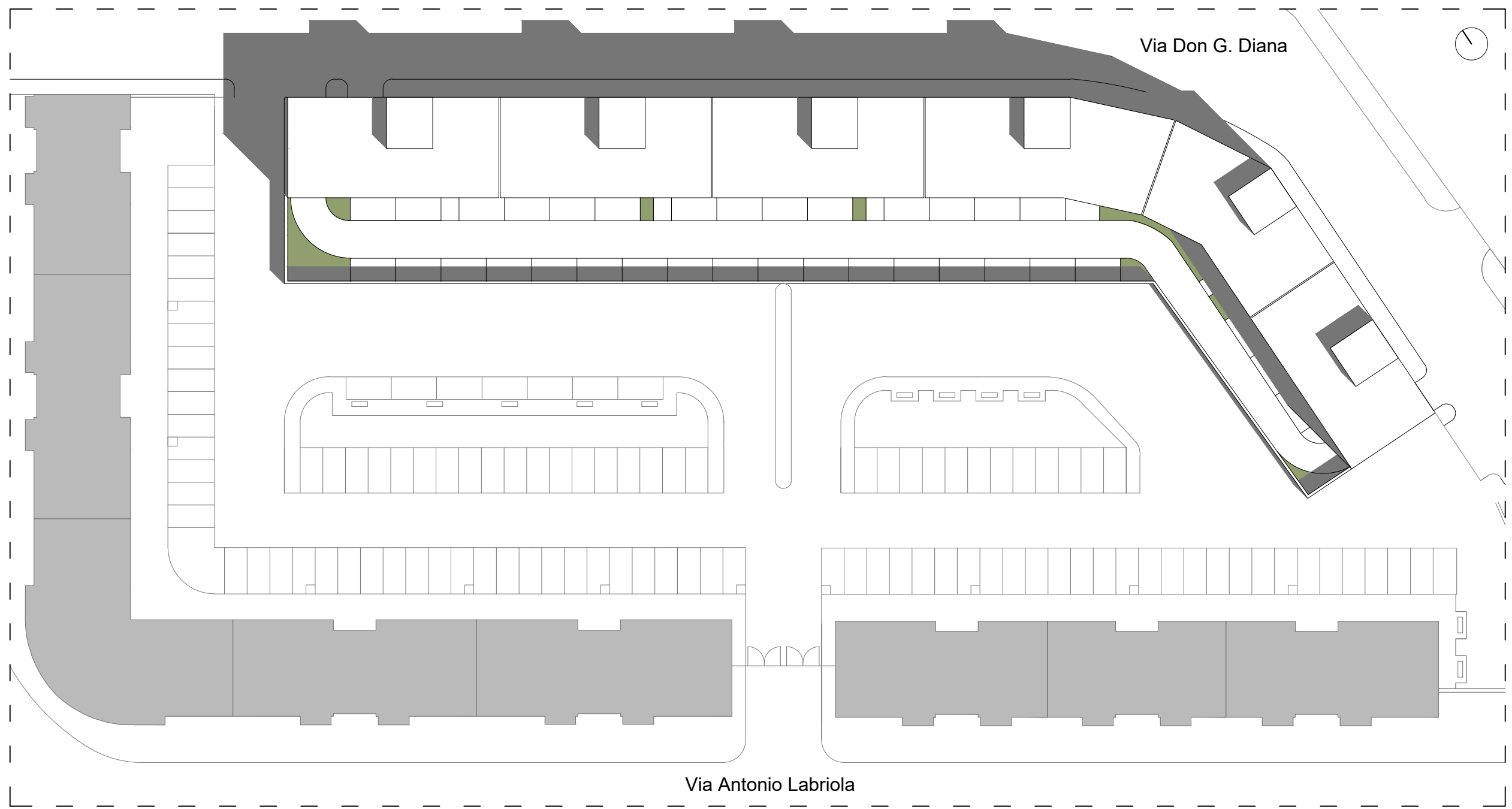
ALLOGGIO TIPO F
Superficie Utile: 55 mq
Numero di alloggi: 5



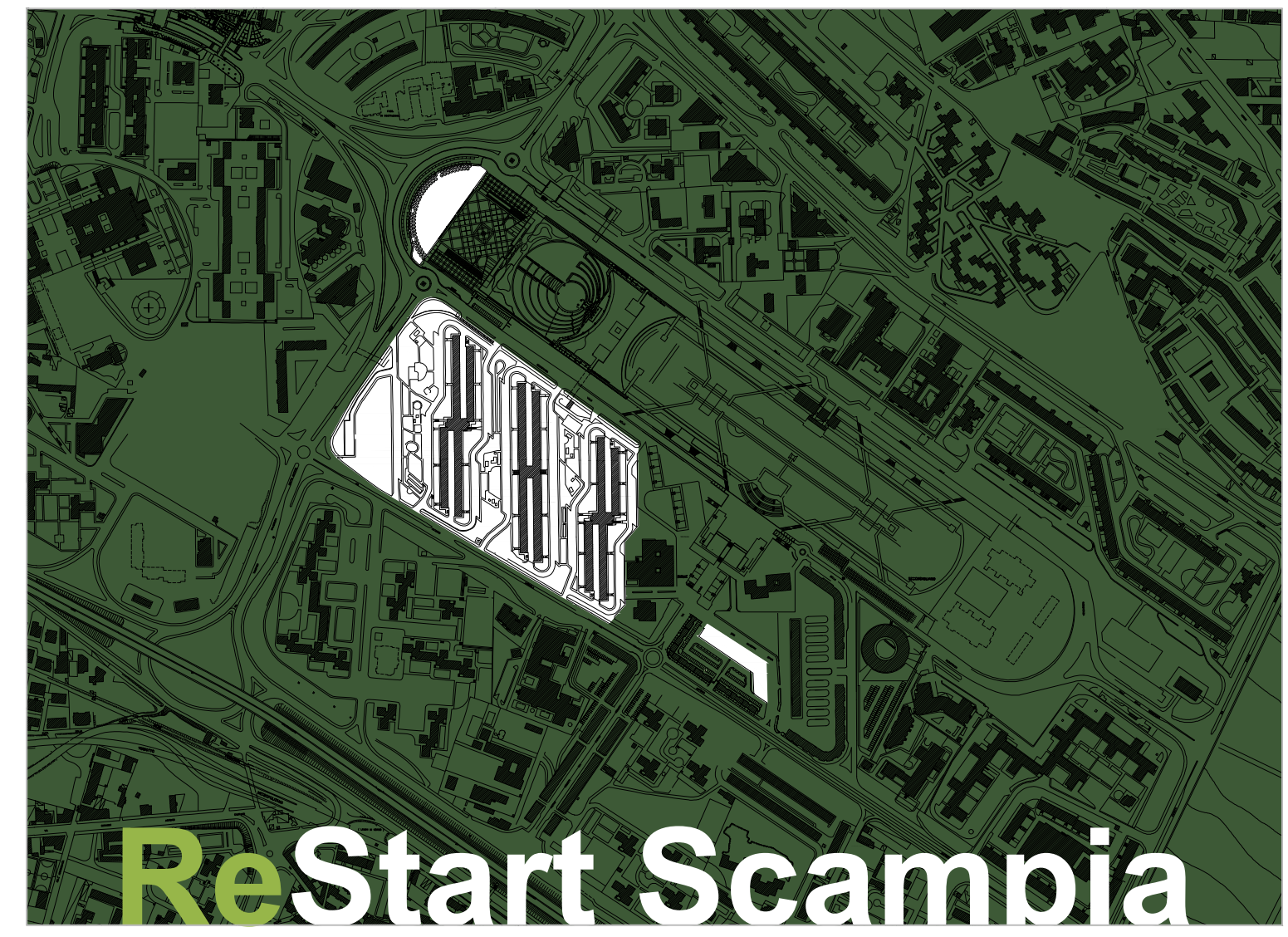
ALLOGGIO TIPO G
Superficie Utile: 62 mq
Numero di alloggi: 5



ALLOGGIO TIPO H
Superficie Utile: 37 mq
Numero di alloggi: 5

Area Urbanistica
Servizio Pianificazione Urbanistica Attuativa



CUP: B61B22000670006	
Il Dirigente	Scala
arch. Massimo Santoro	1.200 - 1.500
Gruppo di progettazione	Revisione
	febbraio 2022
	Nome elaborato
arch. pian. Erika Fricchione arch. Agrippino Graniero arch. Giuseppe Runfolà arch. Anna Scotto di Tella (coordinamento)	08_Intervento 1B - alloggi ERP su via Don Giuseppe Diana